

60-Day Assessment of Mr. Flush® Cleanser on Hematological indices and Kidney Histoarchitecture in Exposed Wistar Rats

Ise, U.P¹., Oyepata S.J²., Famojuro, T.I.³, Johnson O.J⁴., Sebastine A. Z³ , Ibrahim, A.M¹., Williams Ujah⁴ and Builders, M.I¹.

¹Department of Pharmacology and Toxicology, Bingham University, Karu, Nigeria.

²Department of Pharmacology and Toxicology, Federal University Oye-Ekiti, Nigeria.

³Department of Pharmacognosy, Bingham University, Karu, Nigeria.

⁴Department of Anatomy, Bingham University, Karu, Nigeria.

Authors' contributions

This work was carried out in collaboration among all authors. Authors IUP and OS designed the research work, wrote the protocol and first draft of the manuscript. Authors BMI and FTI reviewed and vetted the first draft. Author IUP managed the literature searches, while author WU effected corrections to the first draft. Authors JOJ and IAM performed the statistical analysis. Author WU eviscerated the liver and kidney tissues from all the euthanized experimental rats. All authors made significant financial contributions as well read and approved the final manuscript.

Abstract

Aim: there is a surge in herbal product sales with less adequate information on their safety. The toxicity concerns of Mr. Flush® polyherbal formulation on hematological and biochemical parameters was investigated in Wistar rats.

Methodology: Thirty Wistar rats of both genders were randomly allotted to six groups (5 per group) and treated by oral administration daily thus: Groups 1 and 2-Controls (distilled water, 10 mL/kg), Groups 3-4; 5-6 received the Polyherbal mixture (374, 748) mg/kg, respectively. On 62nd day, animals were euthanized under diethyl ether anesthesia and sacrificed. Blood samples were collected using cardiac puncture for biochemical evaluation. Eviscerated liver and kidneys were weighed and fixed in 10% formalin for histopathological examination.

Results: The LD₅₀ of the Polyherbal Formulation was estimated to be 3740.17 mg/kg (mouse per oral). Results were considered significant at $p \leq 0.05$. There was significant increase in blood platelets (PLT) in low dosed and high dosed groups compared with control, WBCs increased in treatment groups compared with controls. Kidney function parameters such as Urea and Creatinine were elevated in all treatment groups compared to control. Histopathology of the kidneys revealed degrees of pathologies such as occluding Bowman's space, widened proximal and distal convoluted tubules, hyperplasia of cortical tissue cells as well as hyperplasia of tubular and connective tissue cells.

Conclusion: There are significant nephrotoxicity concerns with the long-term consumption of this polyherbal formulation. Findings from the study suggests utmost care in the dosage of herbal formulations when consumed and total abstinence where possible.

1. INTRODUCTION

The use of herbal remedies in the treatment of many ailments in Sub-Saharan Africa, especially in Nigeria has been in practice for centuries and recently, is on the rise¹⁻⁴. However, the claims that these herbal preparations are efficacious in the treatment of these ailments are yet to be scientifically elucidated by relevant agencies such as National Agency for Food Drug Administration and Control (NAFDAC). The production process of these crude herbal preparations are most times, devoid of necessary machinery, standards, quality control, thus, may not be hygienic. These herbal concoctions as a result may contain contaminants (heavy metals, polycyclic aromatic hydrocarbons and microorganisms) that may pose harm to the consumers⁵⁻⁸. There is also the assumption that since these herbal preparations are produced from natural medicinal plants, it would be devoid of any adverse effect when consumed in any amount. Hence, these herbal remedies are without specific doses and undergo no toxicological evaluation before being introduced into the open market. These disadvantages regardless, have not deterred the consumers of these herbal preparations who believe in their purported efficacy and find it cheaper to buy them from the open market without prescriptions than visiting the hospital or any medical facility to access health care¹³⁻¹⁶.

Mr. Flush Cleanser® is a polyherbal product that consists of five different medicinal plant extracts including *curcuma longa*, *azadirachta indica*, *garcinia kola*, *nigella sativa*, and *moringa oleifera*. It is licensed by the National Agency for Food and Drug Administration and Control (NAFDAC) under the registration number A7-1516L.

It is widely distributed and consumed among the inhabitants of North-Central Nigeria as it is acclaimed to be efficacious in the treatment of a plethora of ailments which include diabetes, waist pain, malaria, typhoid, piles, eye infections, low sperm count, vaginal discharge and so on¹⁷⁻²⁰.

There is a dearth of information on the toxicological evaluation of herbal preparations distributed and consumed in North-Central Nigeria (Nasarawa State) both in animal and human studies. Therefore, this study was designed to evaluate the 60-day exposure of Mr. Flush® in Wistar rats.

2. MATERIALS AND METHODS

2.1 Preparation of Stock solution

The herbal formulation was bought from a Pharmacy (major distributor) in Mararaba (Batch number B-22344, NAFDAC registration number A7-1516L), Nasarawa

State and the stock concentration was determined as follows:

Aliquots of 10 mL herbal solution was poured into four crucibles and were evaporated to dryness in an oven (Griffin Britain) with temperature set at 70 °C to determine the marc. The initial weights of the crucibles were determined using a weighing balance. The stock concentration was determined by taking the average of the differences between the weight of the crucibles and weight of marc in 1 mL of the solution (test sample) using the procedure below:

Weight of crucible = A (g)

Weight of crucible + marc = B (g)

Weight of marc = B – A (g)

The final doses administered in mL were calculated using the formula:

Concentration of drug used = $\sum B - A (g) / N (mL) = X$ g/mL

2.2 Experimental Animals

Swiss albino mice and Wistar albino rats of both genders were obtained from and kept at the Department of Pharmacology and Toxicology Animal House of the Faculty of Pharmaceutical Sciences, Bingham University, Nasarawa State, Nigeria. The animals were maintained under standard environmental conditions and fed with standard NIHOR-branded rodent feed (Super Feeds, Nigeria Ltd). The animals were kept at room temperature in cross-ventilated rooms, without illumination at night to achieve the 12 h light/ 12 h dark period. The animals were acclimatized to the laboratory environment for one week before the commencement of the study. All animals were given access to food and water *ad libitum*.

2.3 Determination of Acute Toxicity

The oral median lethal dose (LD₅₀) of the polyherbal mixture was determined according to the modified method of Lorke (Lorke, 1983). A total of twenty (20) Swiss albino mice weighing between 20 – 25 grams were fasted overnight. The animals were divided into five groups of three animals per group and administered orally, various doses of the polyherbal mixture as shown in Table 1. The animals were observed for cardinal signs of toxicity and mortality within 24 h. The estimated LD₅₀ was used to select the appropriate doses to be administered during the 60-day sub-chronic toxicity studies. The LD₅₀ was calculated using the formula:

$$LD_{50} = \sqrt{AB}$$

Where A = maximum dose with 0% mortality and

B = minimum dose with 100% mortality

2.4 Experimental Design

A total of 30 adult Wistar rats of both genders (15 each) were weighed and randomly allotted to six groups of five animals each and treated as shown in Table 2. The animals were treated daily using oral gavage for 60 days of the test period²¹⁻²⁴. Rats in different groups were observed closely for any behavioral changes, feeding and drinking habits, as well as body weight and general morphological changes. At the expiration of the test period, the animals were euthanized under diethyl ether (Sigma Aldrich, USA) anesthesia and sacrificed. Blood samples were collected using cardiac puncture technique

into EDTA and plain sample bottles for hematologic and biochemical (Full blood count, creatinine, blood urea and liver enzymes) investigations respectively. The liver and kidneys were eviscerated for internal macroscopic and histopathological examinations. Animal handling and care was conducted in complete compliance with the Guide for the Care and Use of Laboratory Animals²⁵.

2.5 Hematological Analysis

Blood samples were analyzed using the automated hematological analyzer (HEMA-D6031, China). Parameters analyzed included hemoglobin (Hb) concentration, pack cell volume (PCV), red blood cell count (RBC), White blood cell count (WBC), platelet (PLT), mean cell volume (MCV), mean cell hemoglobin (MCH), and mean cell hemoglobin concentration (MCHC).

2.6 Biochemical Analysis

Serum creatinine: was assayed based on the reaction of creatinine with an alkaline solution of sodium picrate to form a red complex²⁶. Serum creatinine and blood urea nitrogen (BUN) levels were measured as markers of kidney function. Except otherwise stated, these biochemical investigations were done using automated analyzers and Fortress Diagnostic Kits® according to standard procedures of manufacturer's protocols at Bridge Bio-Tech Ltd, Ilorin, Nigeria.

2.7 Histopathological Examination

After the collection of blood from the diethyl ether euthanized and sacrificed rats, the liver and kidneys were immediately excised, freed from adventitia, blotted with tissue paper, weighed, sectioned and fixed in 10% formalin for histological studies. The fixed sections were passed through xylene, alcohol and water to ensure that the tissues were totally free of wax and alcohol. Each section was then stained with hematoxylin and eosin for photo-microscopic assessment using light microscope at a magnification of 40. To minimize bias, the pathologist was denied knowledge of the doses and treatments given to the different groups of experimental rats²⁷.

2.8 Statistical Analysis

Data generated was statistically analyzed using SPSS version 21. Statistical significance between the groups were analyzed by means of one-way analysis of variance (ANOVA). Results were presented as Mean ± S.E.M. and values less than (p < 0.05) were considered significant.

2.9 Limitations

This present study was not followed by a 14-day reversibility study (where exposure of the lower dosed animals to the polyherbal mixture must have been discontinued and all parameters determined in the main work, repeated) due to set limits.

3. RESULTS

3.1 Acute Toxicity Test

Using the modified Lorke's method (Lorke, 1983), the LD₅₀ value of Mr. Flush® cleanser was estimated to be 3740 mg/kg body weight (oral).

3.2 Effect of Treatment on Body Weight

The results of the effect varying doses of the polyherbal mixture on body weights of the rats are presented in table

3.1. During the period of the experiment, the low dose groups showed gradual increase in their body weight from start to end of the study while the high dose groups experienced a decline in body weight during the last two weeks of the study. However, there was no statistically significant ($p < 0.05$) weight difference between control groups and treatment groups administered with the polyherbal mixture.

3.3 Effect of Treatment on Hematological Parameters

The results of the effects of Mr. Flush® Cleanser on hematological indices of Wistar rats after 60 days treatment is as shown in table 3. There was no statistically significant difference ($p > 0.05$) in the levels of packed cell volume, red blood cells, hemoglobin, neutrophils, monocytes, basophils, mean corpuscular volume, mean corpuscular hemoglobin and mean corpuscular hemoglobin concentration of animals in the treatment group when compared with the control group. However, there was a significant increase ($p < 0.05$) in the platelet count and white blood cell count respectively in the treatment groups compared with control. The high dose male (HDM) showed increased white cell count compared to control at a significant level ($p < 0.05$). There was also increased production of platelets in low dose treatment groups (LDM and LDF) administered with the polyherbal formulation ($p < 0.05$), but this increase was highest in the high dose male (HDM) and high dose female (HDF) treatment groups.

3.4 Biochemical Parameters

The biochemical indices for liver and kidney function are as represented in table 4. there was no significant change in serum levels of total and direct bilirubin in the various treatment groups when compared with control. However, there was significant changes ($p < 0.05$) in alkaline phosphatase (ALP), aspartate transaminase (AST) and

urea in the LDM, HDM and HDF groups compared to control. The same was not true for creatinine levels which were insignificant across all treatment groups except the high dose female (HDF) group ($p < 0.05$).

3.5 Histopathological Assessment

Histological examination of the kidney of rats (both genders) in the control groups showed normal and well-preserved histoarchitecture of renal cortex with the urinary tubule, proper orientation of layers of urinary ducts and a clear Bowman's capsule. Low dose groups of experimental rats (LDM and LDF) showed no pathological changes either when compared with control. However, in the High dose groups, some pathological changes and mild inflammation around the renal cortex were seen. This was more evident in the HDF group as seen in figure 1.

Histological examination of the liver of rats (both sexes) in the control groups also showed well preserved cellular architecture of the ductal cells, normal orientation of layers of blood vessels, well-spaced hepatocytes and presence of kupffer cells within the sinusoids. The LDM and LDF groups presented with well-preserved cellular structure, ductal spaces and normal hepatic architecture when compared with the control group.

Table 1. Experimental design for acute toxicity testing of the polyherbal mixture

S/N	Treatment	Dose (mg/kg)	Observed duration
1	Group 1	1000	24 h
2	Group 2	1500	24 h
3	Group 3	2000	24 h
4	Group 4	2500	24 h
5	Group 5	3000	24 h
6	Group 6	4000	24 h

Table 2. Experimental Design

Group	Number of Animals	Treatment	Dose
CM	5	Distilled water	10ml/kg
CF	5	Distilled water	10ml/kg
LDM	5	Mr. Flush Cleanser®	374.17mg/kg
LDF	5	Mr. Flush Cleanser®	374.17mg/kg
HDM	5	Mr. Flush Cleanser®	748.50mg/kg
HDF	5	Mr. Flush Cleanser®	748.50mg/kg

CM=control males, CF=control females, LDM=low dosed males, LDF=low dosed females, HDM=high dosed males and HDF=high dosed females

Table 3. Effect of polyherbal mixture on hematological indices of Wister rats

TREATMENT	PCV (%)	RBC (x 10 ³ /L)	WBC (x 10 ⁹ /L)	PLT (X10 ⁹ /L)	HB (g/dl)	Neutrophils (%)	Monocytes (%)	Eosinophils (%)	Basophils (%)	MCV (fl)	MCH (pg)	MCHC (g/dL)
CM	50.6±0.1	5.1±1.7	4.5±1.0	201.0±0.1	13.3±0.9	20.3±1.4	6.0±0.4	1.7±0.5	0.0±0.0	92.7±1.5	31.8±1.1	30.9±0.9
CF	55.3±2.2	5.4±0.8	4.1±2.1	221.7±2.2	16.5±0.0	24.7±2.0	5.7±0.1	2.3±1.3	0.1±0.0	98.0±1.1	33.4±1.7	31.0±1.2
LDM	46.7±2.4	4.9±1.1	6.1±2.4	275.6±2.1*	13.1±0.6	27.0±3.2	6.3±0.2	1.3±1.2	0.0±0.0	87.0±2.8	31.6±2.1	30.1±2.1
LDF	44.3±0.3	5.1±1.4	9.7±0.9	294.3±1.4*	13.3±1.2	26.3±1.9	4.7±1.7	1.0±0.3	0.0±0.0	87.3±2.2	32.4±1.3	30.8±2.6
HDM	42.7±2.1	4.3±1.2	12.3±1.6*	428.0±1.1*	13.5±1.4	34.3±1.2	6.3±1.6	2.0±3.3	0.1±0.0	84.3±1.4	29.4±0.1	32.9±1.6
HDF	41.0±0.9	4.3±2.2	7.2±2.0	511.67±1.8*	14.5±1.8	37.7±0.5	4.3±1.1	2.0±1.2	0.0±0.0	84.0±0.9	28.6±2.3	31.6±2.8

Values are expressed in Mean±SEM*, **, ***, **** indicates significant differences at $p < 0.05$, $p < 0.01$, $p < 0.001$ and $p < 0.0001$ respectively

Table 4. Weekly changes in weight in animals administered with varied doses of Mr Flush® cleanser.

MR. FLUSH®	CM	CF	LDM	LDF	HDM	HDF
WK0	192.1±4.9	202.7±3.8	205.8±8.8	186.7±9.4	200.9±7.3	205.3±9.9
WK1	198.4±6.2	210.6±3.2	209.4±8.9	193.7±8.3	203.5±6.7	208.6±9.8
WK2	205.5±6.6	215.7±2.8	215.4±9.0	199.2±8.7	209.7±7.1	212.0±9.5
WK3	211.3±5.6	220.8±2.6	219.4±8.5	203.1±8.6	212.7±6.3	216.3±9.7
WK4	215.9±6.0	226.2±1.1	221.1±7.2	206.3±6.7	215.9±6.5	218.0±9.5
WK5	221.0±5.4	230.5±0.5	226.0±6.7	212.8±5.6	220.1±6.2	221.3±9.3
WK6	226.3±4.6	234.1±1.1	233.3±5.4	218.5±5.4	239.0±2.9	224.2±9.0
WK7	233.0±3.8	237.8±9.1	237.6±5.3	228.9±2.0	242.7±2.9	226.8±8.5
WK8	238.7±3.7	236.2±7.0	238.7±2.8	236.0±3.8	245.1±3.3	237.5±5.1
WK9	246.1±2.8	242.2±5.8	243.8±2.1	240.1±2.3	247.4±3.2	239.1±4.9

Values are expressed in Mean±SEM*, **, ***, **** indicates significant differences at p<0.05, p<0.01, p<0.001 and p<0.0001 respectively.

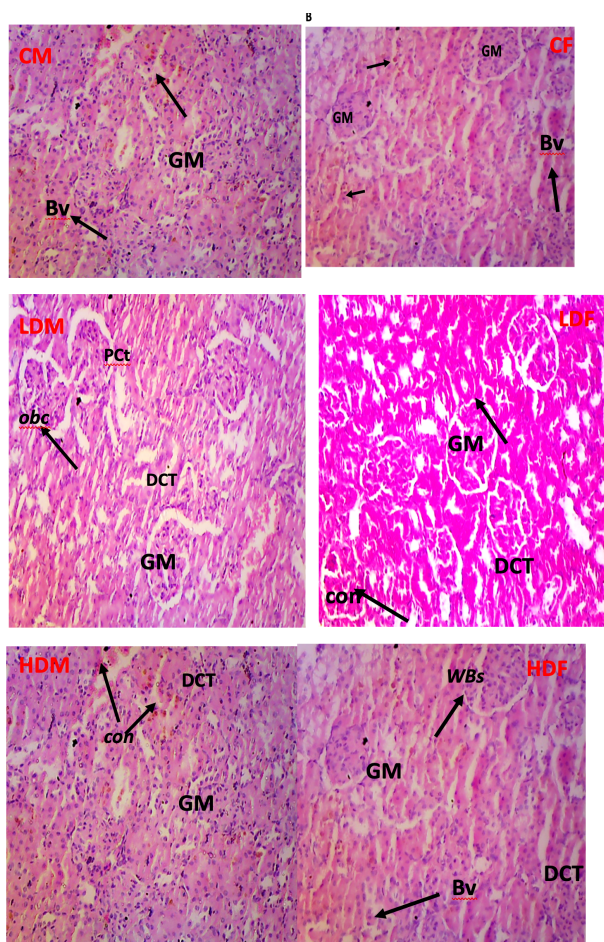


Figure 1 Photomicrographs of kidney sections from controls and Mr. Flush® exposed Wistar rats.

CM = Control males, HDM = High dose males, LDM = Low dose males, CF = Control females, HDF = High dose females, LDF = Low dose females, Obc=obstructed convoluted tubule Widened proximal tubules, Con=congestion, WBS = Widened bowman space, GM = glomerulus, Bv=blood vessel, PCT = Proximal convoluted tubule, DCT = Distal convoluted tubule x 40 magnification.

4. DISCUSSION

In growing animals, gradual weight gain over a considerable length of time is seen as an indicator of good health and nutrition²⁸⁻³¹. It is generally expected that with appropriate balance in diet, physical activity and good homeostasis, living systems are expected to maintain a steady healthy weight throughout life³²⁻³⁴. Fluctuations in mean body weight (excessive weight loss or gain) is seen as indicator of disease or a state of unwellness. In this

present study, animals administered with both low doses and high doses of Mr. Flush® showed variations in weight gain over the period of study. This suggests that there is an interaction between the phytochemical constituents of polyherbal mixture and the intrinsic determinants of weight in the animals although the results were not conclusive as aberrations in weight were deemed statistically non-significant. The results from this study are supportive of data according to Adeyemi et al³⁵ who equally observed changes in weight of animals treated with a certain polyherbal formulation. The aberrations in weight of animals in the treatment groups were credited to the antilipidemic effects of the herbal formulation.

Herbal plants has been used for various medicinal and health benefits. Medicinal plants are often consumed locally without a graded dose or expected duration of use³⁶⁻³⁸. Blood is widely used in toxicological evaluations as a good indicator of pathological and physiological changes in living organisms³⁹⁻⁴⁰. Changes in hematological parameters such as hemoglobin (Hb), hematocrit (PCV), red blood cell (RBC), white blood cell (WBC), blood platelets (PLT), differentials such as mean corpuscular volume, mean corpuscular hemoglobin (MCH) and mean corpuscular hemoglobin concentration (MCHC) are commonly examined to assess toxicity in living organisms. Fluctuations in these hematological parameters is usually indicative of anemia, as well as other hemoglobinopathies⁴¹. This implies therefore that hematological indices are important for the morphologic classification of anaemia. In the present study, animals treated with selected doses of Mr. Flush did not show any significant changes in PCV, and hematocrit, suggestive of a non-toxic effect on the bone marrow of these animals when compared with the control group. WBCs are known to be the body's defense system against infections and invading pathogens⁴¹⁻⁴². Proliferation of white cells are usually suggestive of an immune response to infection. In this study, white cell count was increased significantly in the high dosed groups (HDM and HDF) compared with their respective controls. This effect may suggest the polyherbal formulation has an inductive effect in the hematopoietic cell lines of the bone marrow⁴³. Blood platelets are responsible for blood clotting in animals. Low platelet count suggests that the process of blood clotting would take much longer in such an animal and as a result, there would be much blood loss should in any case of trauma arise in such an animal⁴⁴. In this study, treatment groups administered with both low doses and

high doses of the polyherbal mixture showed significant increase in their platelet count all through the period of study especially the High Dose female group (HDF). This may justify the use of this poly herbal mixture in the treatment of wounds, sores and menorrhagia in women. This positive effect on platelet count could be attributed to the phytochemical constituents of the polyherbal mixture. For example, green plants such as *Mangifera indica* leaves are known to be very rich in vitamin C, carotenoids, folates and other polyphenolic compounds which are essential for clotting and wound healing. According to Nse-abasi⁴⁵, the major function of white blood cells and its differentials are for humoral immunity, to fight infections and defend the body by phagocytosis against invading organisms⁴⁶. A low WBC count in humans is indicative of a decrease in natural immunity and exposure to evading pathogens. This is seen in people infected with HIV and tuberculosis. In this study, Wistar rats treated with selected doses of Mr. Flush® did show slight increase in WBC count especially in the high dosed groups (HDM and HDF). This increase however was not statistically significant when compared with the control groups (CM and CF). This effect suggests that the polyherbal mixture may not be toxic to white blood cell lines.

Blood urea Nitrogen (BUN) and creatinine which are end products of protein metabolism are good indicators of renal function⁴⁷⁻⁵⁰. Urea itself is a waste product of protein metabolism that is normally transferred from the blood to kidneys. Creatinine is a metabolite of muscle creatine whose amounts is usually proportional to muscle mass and size. Increased serum levels of both urea and creatinine are usually indicative of kidney damage or a loss in kidney function⁵¹⁻⁵⁴. In this study, serum levels of urea and creatinine were elevated significantly in rats administered with low dose and high dose of the herbal mixture, Mr. Flush® in comparison to the control and the high dose groups. The nephron is the functional unit of the kidney. Structurally, it comprises of the coiled renal tubule and a vast network of peritubular capillaries and the Bowmans capsule which is responsible for urine formation as well as regulation of glomerular filtration rate (GFR)⁵⁵⁻⁵⁸. The rate of urine formation is directly proportional to the GFR (Newman and Price, 1999). The structural appearance of the Bowmans capsule resembles a coiled funnel with a filter paper attached to it⁵⁹⁻⁶¹. Interestingly, histological examination of the kidney tissues of Wistar rats treated with selected doses of the polyherbal mixture showed some signs of vascular congestion, which maybe as a result of ischemia or poor tissue perfusion within the kidney tissue owing to hyperemia. This finding was equally corroborated by Udom et al.⁶² and Etuk et al.⁶³ who reported the presence of hyperemia in the kidneys of animals administered with doses of a particular polyherbal mixture for 60 days. The poor perfusion within the peripheral tissues of the kidney could trigger an inflammatory response from the leukocytes as well as migration of other local tissue factors (cytokines and interleukins) giving rise to congestion and renal damage. Therefore, the kidneys are

organs of concern with regards to sub-chronic toxicity of Mr. Flush®. However, reversibility studies were not carried out to ascertain if the renal damage were reversible on withdrawal of the polyherbal mixture.

CONCLUSION

Mr. Flush® was found to be safe, with good hematological potentials, supporting label and popular claims. The product was also found to have tendency cause damage to vital organs at high dose and over a considerable period of time.

Conflict of Interest

It is worthy of note that the products employed in this research are common products in our area of research and country. There is no conflict of interest whatsoever between the authors and manufacturer of the products especially as the authors do not intend to use these products as an avenue for any litigation but for the advancement of scientific knowledge. Also, the research received no funding from any external body (the manufacturers of the test substance inclusive) rather it was funded by personal efforts of all the authors.

REFERENCES

1. Adebayo, A. H., Yakubu, O. F., Egbung, G. O., Williams, O. I., and Okubena, O. (2018). Sub-acute toxicological effects of Jobelyn on pregnant albino rats. *AIP Conference Proceedings*. <https://doi.org/10.1063/1.5033398>
2. Adeyemi, O.S., and Akinwande, O.V. (2015). Rat plasma metabolites and renal morphology following oral exposure to a polyherbal mixture. *Research Journal of Medicinal Plants*. 9:34-41.
3. Akhigbe, R. E. (2014). Discordant Results in Plant Toxicity Studies in Africa. *Toxicological Survey of African Medicinal Plants*, 53-61. <https://doi.org/10.1016/b978-0-12-800018-2.00004-2>
4. Builder MI, Anzaku SA, Joseph SO (2019). Effectiveness of intermittent preventive treatment in pregnancy with sulphadoxine-pyrimethamine against malaria in northern Nigeria. *International Journal of Recent Scientific Research* Vol. 10 (05), pp. 32295-32299.
5. Joseph OS, Builders M, Joseph OT, Sabastine AZ, Musa TI and Oyepata PJ. (2019). Sub-acute toxicity study of ethanol leaf extract of *Ocimum canum* on the kidney of wistar rats. *African Journal of Pharmaceutical Research & Development*. Vol. 11 No.1. Page 1-7.
6. Archana S., and Vijaya, C. (2019). A study of hematological parameters and their correlation with thyroid hormone status in non-pregnant women of childbearing age. *Indian Journal of Pathology and Oncology*. 6(1):102-106.
7. Joseph OS, Builders M, Joseph OT, Sabastine AZ, MUSA TL and Oyepata PJ. (2019). Sub-acute toxicity study of ethanol leaf extract of *Ocimum canum* on brain, lungs, stomach and spleen of wister rats. *African Journal of Pharmaceutical Research & Development*. Vol. 11 No.1. Page 35-42.
8. Joseph O. S., Joseph O. T., Musa T. L and Oyepata P. J. (2019). Histological evaluation of the nephroprotective activity of the ethanol stem extracts of *Homalium letestui* in Gentamicin – induced albino rats injury, using various staining techniques. *Global Scientific Journal*. Volume 7, Issue 8. Page 1065-1087.
9. Joseph O.S., Builders M., Emem E.U and Joseph O.T. (2019). Effect of ethanol leaf extract of *Cassia angustifolia* extract on liver of wister rats. *Global Scientific Journal*. Volume 8, Issue 9. Page 1112-11120.
10. Joseph O.S., Builders M., Emem E.U and Joseph O.T. (2019). Effect of ethanol leaf extract of *Cassia angustifolia* extract on kidney of Wister Rats. *Global Scientific Journal*. Volume 7, Issue 10. Page 106-122.
11. Haruna WC, Simeon JO, Builders M, Tosin JO (2020). Effect of ethanol leaf extract of *Cassia angustifolia* extract on heart

- and lipid profile of wister rats. *African Journal of Pharmaceutical Research & Development*. Vol. 12 No.1. Page 1-8.
12. Haruna WC, Builders M, Simeon JO, Tosin JO (2020). Toxicological Study of the Effect of Ethanol Leaf Extract of *Pterocarpus santalinus* Extract on Liver of Wister Rats. *Nigeria biomedical Science Journal*. Page 17-29.
 13. Wazis CH, Joseph OS, Modupe B, Joseph OP (2020). Effect of Ethanol Leaf Extract of *Pterocarpus santalinus* Extract on Kidney of Wister Rats. *Nigerian Biomedical Science Journal* Vol. 17 No 1. Page 35-47.
 14. Builder M.I., Joseph S.O, Olugbemi T.O. and Akande, T (2020). Toxicity. Studies of extract of African Mistletoe: *Agelanthus Dodoneifolius* Polh and Wiens in Rats. *Nigeria biomedical Journal*. Page 113-130
 15. Builders M. I., Joseph S.O., Bassi PU. (2020). A Survey of Wound Care Practices by Nurses in a Clinical Setting. *International Journal of Healthcare and Medical Sciences*. Vol. 6, Issue. 5, Page 74-81.
 16. Joseph O. S., Builders M., Joseph O. T. (2020). Effect of Caffeine on Diazepam - Induced Sedation and Hypnosis in Wister Rat. *Global Scientific Journal*. Vol. 8, Issue 9. Page 451-466
 17. Joseph O. S., Builders M., Joseph O. T., Sabastine A.Z. (2020). Assessing differential impacts of COVID-19 on African countries: A comparative study. *International Journal of Research and Innovation in Applied Science*. Vol. 5, Issue 5. Page 197-203
 18. Simeon JO., Lubo MT., Tosin JO., Irabor I. (2020). The Dynamics of Differential Impacts of COVID-19 on African Countries Compared to Other Parts of the World. *International journal of multidisciplinary research and analysis*. Volume 03 Issue 11. Page 185-198.
 19. Builders MI, Simeon JO, Ogundeko TO, Builders P. (2020). Antimalarial Drugs and COVID -19. *Sumerian Journal of Medical and Healthcare*. Vol. 3, No. 12, pp. 111-116.
 20. Zubairu SA, Simeon JO, Tosin JO (2021). Effect of ethanol leaf extract of *Terminalia chebula* extract on kidney of wister rats. *Global scientific Journal*. Volume 9, Issue 2. Page 514-526.
 21. Joseph OS , Builders M , Joseph O T , Famojuro TI, Ogira JO, Moses FD, Musa TL. (2021). Effect of the Demographic of Covid-19 on Different Countries; Using the USA for Comparism. *International journal of multidisciplinary research and analysis*. Volume 04 Issue 02. Page 193-203.
 22. Joseph SO, Opeyemi JT. (2021). Effect of Clinical Study of *Moringa oleifera* on Body mass index, Low density lipoprotein and Triglyceride level in Patients on Tenofovir/lamivudine/efavirenz Combination Therapy. *Advanced Herbal Med*. Vol. 6. Issue 1. Page. 14-27 .
 23. Zubairu SA, Festus OA, Simeon JO, Irabor I, Tosin JO. (2021). Effect of *Anacardium occidentale* Fruit Juice Extract on Haematological Parameters and Spleen of Paracetamol Induced Injury in Albino Rats. *Global Scientific Journal*. Volume 9, Issue 7. Page 1640-1654.
 24. Sabastine AZ , Joseph OS , Joseph OS, Famojuro TI, Olorunfemi AF. (2021). Effect of Cashew apple juice (*Anacardium occidentale* L.) on Hematology and Spleen of Gentamicin Induced Injury in Albino Rats. *Global Scientific Journal*. Volume 9, Issue 7. Page 3686-3698.
 25. Tosin JO, Zubairu SA, Simeon JO. (2021). Clinical Effect of *Moringa oleifera* on Body Mass Index, Triglyceride and High Density Lipoprotein in Subjects Taken Tenofovir Combination Regimen. *European Journal of Biology and Medical Science Research*. Vol.9, No.4, pp.6-19.
 26. Smeon JO, Zubairu SA, Tosin JO. (2021). Global Implication of Differential Impacts of Covid-19 on Different Countries Using the USA as A Comparism Factor. *Journal of Nursing and Health Science*. Volume 10, Issue 5. PP 36-44.
 27. Simeon JO, Simeon JO, Zubairu SA, Adegbenga AD (2021). Concomitant administration of ethanol leaf extract of *Thymus vulgaris* induced Sedation and Hypnosis in Wister Rat. *Journal of Nursing and Health Science*. Volume 16, Issue 5. PP 04-09.
 28. Simeon JO, Zubairu SA, Tosin JO (2021). Clinical evaluation of the potential benefits of taking *Moringa oleifera* on blood triglyceride and cholesterol level in patient taking Tenofovir/Lamivudine/Efavirenz (TLE) combination. *Journal of Pharmaceutical Science & Research*. Vol. 13(10), 623-629.
 29. Oyepata JS. (2021). The Earth: A Lost Planet from another Universe. *International Journal Of Multidisciplinary Research And Analysis*. Volume 04 Issue 12. Page 1795-1797
 30. Simeon JO, Tosin JO, Adegbenga AD. (2021). The Relative Global Consequences of Cumulative Distribution of Covid-19, Using the USA as Comparism Factor and Cumulative Covid -19 Data of 31st October 2021. *International Journal of Multidisciplinary Research And Analysis*. Page 1906 -1917.
 31. Joseph O.T., Joseph O. S., Chinwe A. F. (2021). Clinical Study on the Effect of *Moringa oleifera* on Body mass index, Serum Level of High density lipoprotein and Triglyceride in Subjects Taken Tenofovir, Lamivudine and Efavirenz Combination Regimen. *J RNA Genom 2021 Volume S04 Issue 004*. Page 1-6.
 32. Zubairu SA, Simeon JO, Tosin JO (2022). Analysis and understanding the progress, trend and consequences of Covid -19 pandemic over a seven days period across different countries of the world. *International Journal of Advances in Engineering and Management (IJAEM)*. Volume 4, Issue 2 pp: 1588-1598.
 33. Simeon JO, Tosin JO, Zubairu SA, Oyepata JS (2022). Studying the trend and progress on Covid-19 pandemic from 29th January to 4th of February 2022 across different countries of the world. *International Journal of Research and Innovation in Social Science (IJRISS) |Volume VI, Issue II*. Page 499-505.
 34. Simeon JO, Tosin JO, Zubairu SA, Daniel MF. (2022). Toxicological evaluation of *Lavandula stoechas* on heart and blood of wistar rat. *International Journal of Advances in Engineering and Management (IJAEM)*. Volume 4, Issue 4 Apr 2022, pp: 1233-1241.
 35. Simeon JO, Zubairu SA, Tosin JO, Sunday SB. (2022). Update report and analysis on the global trends and progress of Covid -19 pandemic on 18th January, 2022 across different countries of the world. *International Journal of Research and Innovation in Applied Science (IJRIAS) |Volume VII, Issue IV*. Page 58 -66.
 36. Joseph O. T., Olorunfemi A. F., Sabastine A. Z., Sebastine B. S., Joseph O. S.. (2022). Understanding the cumulative distribution, implication and progress on Covid -19 pandemic as at 7th of February 2022 across different countries of the world: An update report. *International Journal of Research and Innovation in Social Science (IJRISS) |Volume VI, Issue IV*. Page 691-699.
 37. Simeon, J.O., Tosin, J.O., Zubairu, S.A. (2022). Cumulative evaluation of demography and distribution of COVID-19 around the globe: An update report of COVID-19 until 17th February 2022. *Int J Epidemiol Health Sci*;3(6): e34. Doi: 10.51757/IJEHS.3.6.2022.251435.page 1-19.
 38. Oyepata JS, Simeon JO. (2022). The Earth: An Alien Planet in Another Universe. *Global Journal of Science Frontier Research: A Physics and Space Science*. Volume 22 Issue 1. Page 55-57.
 39. Joseph O. S. , Sabastine A. Z, Joseph O. T., Adegbuyi T. A.(2022). An Analysis of Daily distributive effect of COVID-19 Pandemic across the Globe Using the USA as a Comparism Factor: An update report of 17th of February, 2022.
 40. Jasper, R., Locatelli, G.O., Pilati, C. and Locatelli C. (2012). Evaluation of biochemical, hematological and oxidative parameters in mice exposed to the herbicide glyphosphate-Roundup®. *Journal of interdisciplinary Toxicology*. 5(3): 133-140.
 41. Joseph O.S., Builders M., Emem E.U and Joseph O.T. (2019). Effect of ethanol leaf extract of *Cassia angustifolia* extract on kidney of Wister Rats. *Global Scientific Journal*. Volume 7, Issue 10. Page 106-122.
 42. Johnson, A.M. Analysis of animal weight gains in chronic toxicity studies. *J Toxicol Environ Health*, 1981, 7(2):307-16.
 43. Lorke D. (1983). A new approach to practical acute toxicity testing. *Archive of Toxicology*. 54(4): 275-287.
 44. Modupe BI, Simeon JO, Tosin JO. (2022). Toxicological study of ethanol extract of *Lavandula stoechas* on Liver of Wistar rat. *International Journal of Advances in Engineering and Management (IJAEM)* Volume 4, Issue 9. pp: 892-901.
 45. National Research Council. (2011). Guide for the care and use of laboratory animals. National Academies, Washington DC.
 46. Newman, D.J and Price, C.P. (1999). Renal function and nitrogen metabolites. In: Burtis CA, Ashwood ER, editors. *Tietz Textbook of Clinical Chemistry*. 3rd ed. Philadelphia: W. B. Saunders Company. Pp 120-135.

47. NseAbasi N. E., Mary, E. W., Usual, A., Edem, E. A. O. (2014). Hematological parameters and factors affecting their values. *Journal of Agricultural Science* 2(1): 37-47.
48. Sarma, P. R. (1990). In: Red cell indices. Clinical Methods: The History; Physical and Laboratory Examinations. 3rd edition.
49. Simeon JO, Zubairu SA, Tosin JO (2021). Clinical evaluation of the potential benefits of taking *Moringa oleifera* on blood triglyceride and cholesterol level in patient taking Tenofovir/Lamivudine/Efavirenz (TLE) combination
50. Tietz NW. (1995). Clinical guide to laboratory tests. 3rd ed. Philadelphia: W. B. Saunders; pp 76.
51. Udom, G.J., Okokon, J.E., Udobang, J.A., Obot, D.N., and Asuquo I.K. (2020). Nephrotoxicity Assessment of Dr IgedoGoko Cleanser® in Exposed Wistar Rats. *Asian Journal of Research in Medical and Pharmaceutical Sciences*. 9(1): 30-40.
52. Yemitan, O.K. and Adeyemi, O.O. (2004). Toxicity studies of the aqueous root extract of *Lecaniodiscuspanioides*. *Nigerian Journal of Health and Biomedical Sciences*. 203:20-23.
53. Yemitan, O.K., Adeyemi, O.O. and Izege, M.C. (2015). Toxicological and reversibility assessment of *Dalbergia saxatilis* root extracts on body and organ weights, hepatic functions and peroxidation in rats. *European Journal of Medicinal Plants*. 11(4):1-13.
54. Yosa, D. and Wibowo, A. (2019). Correlation between blood urea and creatinine level in patients with diabetes melitus at the ministry of marine and fishery clinic, Indonesia. The 6th International Conference on Public Health. DOI:10.26991/the6thicph-FP.05.02.
55. Simeon JO, C Ariahu Emmanuel, Tosin JO , Zubairu SA. (2022). Virological and immunological consequences of Covid -19 pandemic distribution across different countries; A seven days update study. *International Journal of Advances in Engineering and Management (IJAEM)* Volume 4, Issue 8. pp: 871-883
56. Tosin JO, Simeon JO. (2022). Mathematical and demographic understanding on the effect Covid 19 across the country of the world; An update report of cases and death from 2nd to 8th of August, 2022. *International Journal of Advances in Engineering and Management (IJAEM)* Volume 4, Issue 8. pp: 891-903.
57. Modupe BI, Simeon JO, Tosin JO. (2022). Toxicological study of ethanol extract of *Lavandula stoechas* on Liver of Wistar rat. *International Journal of Advances in Engineering and Management (IJAEM)* Volume 4, Issue 9. pp: 892-901.
58. Burtis CA, Ashwood ER, Bruns DE. Creatine (2006). Textbook of Clinical Chemistry and Molecular Diagnostics. 5th ed. Philadelphia: W. B. Saunders Co. pp 56-59.
59. Etuk IC, Udobang JA, Daniel AO, Ekong O, Okokon JE, Joseph OS. (2023). Effect of leaf extract and fractions of *Solanum anomalum* on oxidative stress markers, kidney function indices and histology of alloxan-induced diabetic rats. Vol 3. Page 783-799. <https://doi.org/10.54117/jcbr.v3i1.4>
60. Modupe BI, Simeon JO, Oyepata JS, Tosin JO. (2022). Update report on comparison and analysis on the progress made in cases and death of COVID-19: A seven days study. *International Journal of Advances in Engineering and Management (IJAEM)* Volume 4, Issue 9 Sep. 2022, pp: 902-915
61. Awodele, O., Yemitan, O.K., Ise, U.P., and Ikumawoyi, V.O. (2016). Modulatory potentials of aqueous extracts of leaf and unripe fruits of *Caricapapaya* Linn. (Caricaceae) against carbon tetrachloride and acetaminophen-induced hepatotoxicity in rats. *Journal of Intercultural Ethnopharmacology*. (5)121-125. DOI: 10.5455/jice.20160124113528.
62. Simeon JO. (2022). UFOs and Human: Understanding the Relevance, Purpose and Humofunctional Implication. *International Journal of Research Publication and Reviews*, Vol 3, no 9, pp 1304-1308.
63. Builders Iretiola M, Joseph Oyepata S, Joseph Opeyemi T. (2022). Toxicological Study of Ethanol Extract of *Lavandula Stoechas* on Kidney of Wistar Rat. *International Journal of Research Publication and Reviews*, Vol 3, no 9, pp1290-1298.