

# Simultaneous Estimation of Sumatriptan Succinate, Metoclopramide Hydrochloride and Paracetamol by RP-HPLC Method

Aaditya Singh, Shiv Bhadra Singh,

Faculty of Pharmacy, Aryakul college of Pharmacy and Research  
Lucknow, India

## Abstract

The aim of the study was to develop and validate Reverse Phase High Performance Liquid Chromatography (RP-HPLC) assay for simultaneous estimation of 5-HT agonist, antiemetic and analgesic drugs (Sumatriptan succinate, Metoclopramide HCl and Paracetamol). Chromatographic separation achieved isocratically on a C<sub>18</sub> column, utilizing a mobile phase of KH<sub>2</sub>PO<sub>4</sub> buffer:MeOH (60:40 v/v), pH 5 at a flow rate of 0.5 ml/min with a UV detection at 230 nm for 6.8 min, 248 nm from 6.81 to 8.5 min and 213 nm for rest of the time using Shimadzu Chromatographic HPLC System and Hamilton, Bondaz AZ microliter syringe. Sample solutions were prepared in the mobile phase with concentration range of 0.5-32 µg/mL by the serial dilution technique. Chromatogram was obtained in which the retention time were 6.1, 7.4 and 10.8 min for sumatriptan succinate, paracetamol and metoclopramide HCl respectively. The linearity of sumatriptan succinate, paracetamol and metoclopramide HCl was in range of 0.5-32 µg/mL. The coefficient of correlation (r<sup>2</sup>) for sumatriptan succinate, paracetamol and metoclopramide HCl were found to be 1, 0.999 and 0.999 respectively over a range of 0.5-32 µg/mL.

This method was validated by determining its accuracy, precision, linearity, reproducibility and specificity according to ICH guidelines and used for quality control and routine bulk drug analysis.

## INTRODUCTION

Headache is the most common complaint of patients seen by the physician. It may be serious symptoms of intracranial structural changes caused by brain tumors, cerebrovascular disorders like aneurysms and angiomas. Other organic disorders causing headache include glaucoma, hypertension and chronic sinusitis. The nerve cells of the brain itself are not sensitive to the pain-producing stimuli, but arteries causing the membrane covering the brain contain pain-sensitive nerve endings. When these intracranial arteries are distended, pain i.e. perceived. Nerve impulses also arise from extra cranial structures like skin, blood vessels and muscles of the scalp and neck, which becomes a source pain. In addition, psychic causes may also cause a kind of chronic headache.

Thus headache may be divided into two:

- Tensions, or muscle contractions headaches.
- Vascular headache.

Vascular headaches are the results of dilatation of the intracranial and extra cranial arteries and are sometimes classed as migraine and non-migraine types.

Migraine is a mysterious disorder which is associated with nausea, vomiting, pain, sensitivity to light and sound, vertigo, loose motions and other symptoms.

As there is no established method for the simultaneous estimation of sumatriptan succinate, metoclopramide hydrochloride and paracetamol drugs in combined dosage form by RP HPLC, the present work describes the development of a validated RP-HPLC method, which can quantify these components simultaneously from a combined dosage form.

## EXPERIMENTAL

### Reagents and chemicals:

Acetonitrile and methanol (HPLC grade) was procured from Rankem Ltd., Delhi (India). Orthophosphoric acid (AR grade) were procured from Merck Ltd., Mumbai.

Potassium dihydrogen orthophosphate was procured from

S.D Fine Chem Ltd., Mumbai. Water (HPLC grade) was obtained from a Milli-QRO water purification system. Reference standards of paracetamol was procured from Unichem pharmaceuticals, Mumbai, sumatriptan succinate was procured from Dr. Reddy laboratories Ltd, Hyderabad and metoclopramide HCl was procured from Ipca laboratories, Ratlam.

### Apparatus and chromatographic conditions:

For the Chromatographic analysis, Shimadzu HPLC system was used that was equipped with a solvent delivery module {LC-10 AT VP}, Rheodyne manual injector 7725i fitted with 20 µL loop and UV detector {SPD-10A VP}. The separation was achieved on RP C18 column {125 x 4.6 mm, 5 micron particle size} using KH<sub>2</sub>PO<sub>4</sub> buffer:MeOH (60:40 v/v) pH5 as mobile phase. The pH of mobile phase was adjusted to 5 with the help of N/20 KOH solution. The flow rate was 0.5 ml/min and the peaks were integrated by UV detector at 230 nm for 6.8 min, 248 nm from 6.81 to 8.5 min and 213 nm for rest of the time. Operation, data acquisition and analysis were performed using Spinchrom 1.7 software. Analysis was performed at ambient temperature.

### Preparation of standard solutions:

Standard stock solutions of 1000 µg/mL sumatriptan succinate, metoclopramide HCl and paracetamol, were prepared separately using acetonitrile. From the standard stock solution, mixed standard solution was prepared to contain 100 µg/mL of each drug by using mobile phase solution.

### Preparation of sample solution:

Three test solution of mixture of drugs were made. The three test solution represent three levels of concentration viz. High, medium, low. Concentration of 16 µg/ml, 4 µg/ml, 1 µg/ml represent the high, medium and low levels, respectively for sumatriptan succinate, paracetamol and metoclopramide HCl.

5 tablets of sumatriptan succinate and 10 tablets of each of paracetamol and metoclopramide HCl were weighed and

finely powdered. A quantity of the powder equivalent to one tablet was weighed and separately dissolved in 10 mL acetonitrile in a volumetric flask. All the flask were sonicated for 15 min twice and an aliquot was centrifuged at 1,000 rpm for 1 hour.

#### Assay method:

With the optimized chromatographic conditions, a steady baseline was recorded, the mixed standard solution was injected and the chromatogram was recorded. The retention times of sumatriptan succinate, paracetamol and metoclopramide HCl were found to be 6, 7.5 and 10.8 min, respectively. This procedure was repeated for the sample solution obtained from the formulation. The response factor of the standard solution and sample solution were calculated.

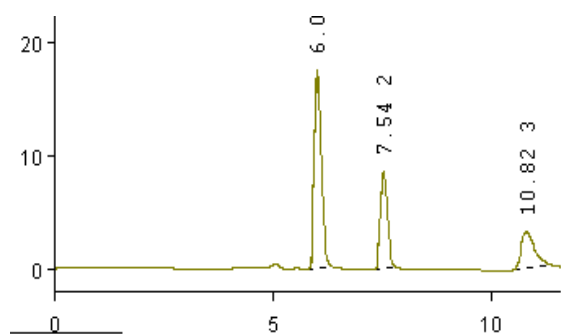
### RESULTS AND DISCUSSION

#### Estimation of sumatriptan succinate, metoclopramide and paracetamol in dosage forms:

The HPLC procedure was optimized with a view to develop precise and stable assay method. The pure drugs sumatriptan succinate, metoclopramide HCl and paracetamol were run in different mobile phase compositions with different pH and wavelength. The flow rate was also varied from 0.5 mL to 1.2 mL/min. Finally S.D fine chem. C18 column (125 x 4.6 mm, 5 micron particle size), with a mobile phase of a mixture of  $\text{KH}_2\text{PO}_4$  buffer:MeOH (60:40 v/v) pH5. The pH of mobile phase was adjusted to 5 with the help of N/20 KOH solution. The flow rate was 0.5 ml/min and the peaks were integrated by UV detector at 230 nm for 6.8 min, 248 nm from 6.81 to 8.5 min and 213 nm for rest of the time. The typical chromatogram of sample solution is shown in Fig.1. The peak area ratio of standard and sample solutions was calculated. The percentage of individual drugs found in formulations, mean, standard deviation in formulations were calculated and presented in Table I. The results of analysis shows that the amounts of drugs were in good agreement with the label claim of the formulations.

**Table – I: Results of Analysis of formulation and Recovery Studies**

Drug	Quantity claimed (mg/tab)	Quantity found (mg/tab)	% Quantity found
Sumatriptan succinate	25	25.160	100.642
Paracetamol	500	499.97	99.99
Metoclopramide HCl	10	10.008	100.081



**Fig 1. Typical Chromatogram of Sample Solution**

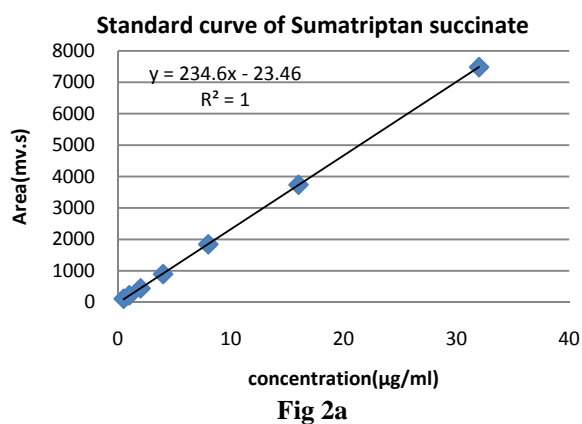
#### Accuracy and precision:

The accuracy of the method was determined by recovery experiments. The recovery studies were carried out three times and the percentage recovery and standard deviation of the percentage recovery were calculated. From the data obtained, added recoveries of standard drugs were found to be accurate.

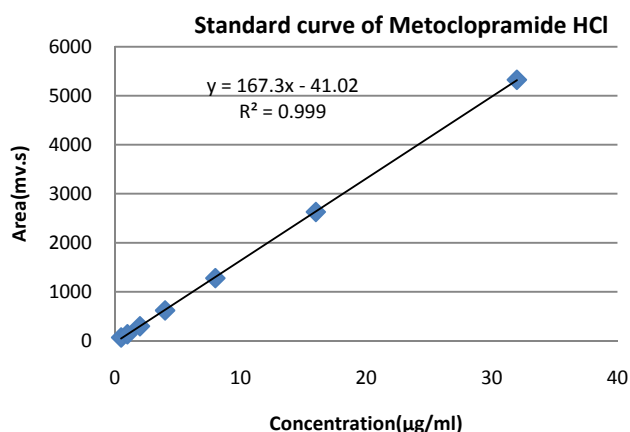
The precision of the method was demonstrated by inter-day and intra-day variation studies. In the intra-day studies, three repeated injections of standard and sample solutions were made and the response factor of drug peaks and percentage RSD were calculated. In the inter-day variation studies, three repeated injections of standard and sample solutions were made for three consecutive days and response factor of drugs peaks and percentage RSD were calculated. From the data obtained, the developed RP-HPLC method was found to be precise.

#### Linearity and Range:

The linearity of the method was determined at seven concentration levels ranging from 0.5 to 32  $\mu\text{g}/\text{mL}$  for each of the three drugs. The calibration curve was constructed by plotting response factor against concentration of drugs. The slope and intercept value for calibration curve was  $y = 234.65x - 23.465$  ( $R^2=1$ ) for sumatriptan succinate and  $y=167.37x-41.02$  ( $R^2=0.999$ ) for metoclopramide HCl and  $y=166.07x-20.02$  ( $R^2=0.999$ ) for paracetamol. The results shows that an excellent correlation exists between response factor and concentration of drugs within the concentration range indicated above. The calibration curves are shown in following Figures. 2a,2b,2c..



**Fig 2a**



**Fig 2b**

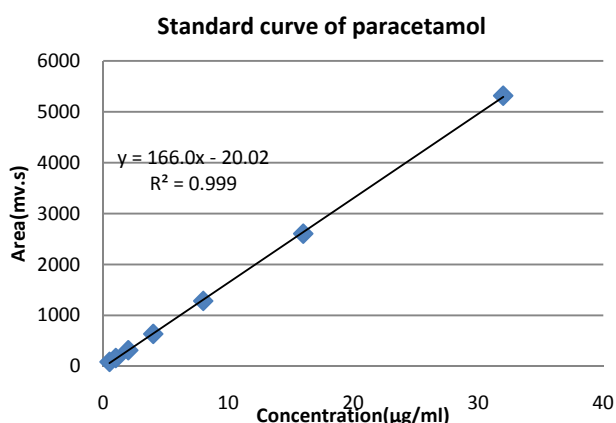


Fig 2c

**Limit of Detection and Limit of Quantification:**

The limit of detection (LOD) and limit of quantification (LOQ) of the developed method were determined by injecting progressively low concentrations of the standard solutions using the developed RP-HPLC method. The LOD is the smallest concentration of the analyte that gives a measurable response (signal to noise ratio of 3). The LOD for sumatriptan succinate, metoclopramide HCl and paracetamol was found to be 0.0107µg/mL, 0.0102 µg/mL and 0.0104 µg/mL respectively. The LOQ is the smallest concentration of the analyte, which gives response that can be accurately quantified (signal to noise ratio of 10). The LOQ was 0.035 µg/mL for sumatriptan succinate and 0.034 µg/mL for metoclopramide HCl and paracetamol (Table II).

**Table II: System Suitability Studies**

Parameters	Sumatriptan succinate	Metoclopramide HCl	Paracetamol
Linearity range	0.5-32µg/mL	0.5-32µg/mL	0.5-32µg/mL
Regression equation $Y = mx + c^*$	$y = 234.65x - 23.465$	$y = 167.37x - 41.02$	$y = 166.07x - 20.02$
Correlation coefficient	1	0.999	0.999
Theoretical plate no.	6541	10271	5478
Resolution factor	-	5.117	7.401
Asymmetric factor	1.526	1.450	2.219
LOD (µg/mL)	0.0107	0.0102	0.0104
LOQ (µg/mL)	0.035	0.34	0.34

**System suitability studies:**

The retention time, capacity factor, theoretical plate no., resolution and peak asymmetry were calculated for the standard solutions (Table II). The values obtained demonstrated the suitability of the system for the analysis of these drug combinations.

**CONCLUSION**

The proposed RP-HPLC method for the simultaneous estimation of sumatriptan succinate, metoclopramide HCl and paracetamol in combined dosage forms is accurate, precise, linear, simple and rapid. Hence the present RP-HPLC method is suitable for the quality control of the raw materials, formulations and dissolution studies.

**REFERENCES**

- Jain, D.; Kachave, R. N.; Bhadane, R. N. Simultaneous estimation of tramadol hydrochloride, paracetamol and domperidone by RP-HPLC in tablet formulation. *J. Liq. Chromatogr. Relat. Technol.* **2010**, *33*, 786-792.
- Vaidya, V.V.; Singh, G.R.; Choukekar, M. P.; Kekare, M. B. Simultaneous RP HPLC determination of aceclofenac, paracetamol and tizanidine in pharmaceutical preparation. *Eur. J. Chem.*, **2010**, *7*, 260-264
- Shidhaye, S.; Malke, S.; Kadam, V. Development and validation of stability indicating HPLC method for estimation of metoclopramide hydrochloride from a novel formulation. *J. Pharmacy Res.* **2009**, *2*, 290-295.
- Battu, P.R.; Reddy, M.S. RP-HPLC method for simultaneous estimation of paracetamol and ibuprofen in tablets. *Asian J. Research Chem.* **2009**, *2*, 70-72.
- Battu, P.R. Simultaneous RP-HPLC determination of nimesulide and paracetamol in tablets. *Int. J. PharmTech. Res.* **2009**, *1*, 514-516.
- Cossu, M.; Sanna, V.; Gavini, E.; Rassa, G.; Glunchedi, P. A new sensitive reversed-phase high performance liquid chromatography method for the quantitative determination of metoclopramide in canine plasma. *J. Anal. Lett.* **2008**, *41*, 767-778.
- Stosik, A. G.; Junginger, H. E.; Kopp, S.; Midha, K. K.; Shah, V. P.; Stavchansky, S.; Dressman, J. B.; Barends, D. M. Biowaiver monographs for immediate release solid oral dosage forms: metoclopramide hydrochloride. *J. Pharm. Sci.* **2008**, *97*, 3700-3708.
- Gopinath, R.; Rajan, S.; Meyyanathan, S. N.; Krishnaveni, N.; Suresh, B. ARP-HPLC method for simultaneous estimation of paracetamol and aceclofenac in tablets. *Indian J. Pharm. Sci.* **2007**, *69*, 137-140.
- Chmielewska, A.; Konieczna, L.; Plenis, A.; Lamparczyk, H. Sensitive quantification of chosen drugs by reverse-phase chromatography with electrochemical detection at a glassy carbon electrode. *J. Chromatogr. B.* **2006**, *839*, 102-111.
- Vyas, K. T.; Babbar, A. K.; Sharma, R.K.; Singh, S.; Misra, A. Preliminary brain-targeting studies on intranasal mucoadhesive microemulsions of sumatriptan. *J. AAPS Pharm. Sci. Tech.* **2006**, *6*, Article 8.
- Teng, I.; Bruce, R. B.; Dunning, L. K. Metoclopramide metabolism and determination by high-pressure liquid chromatography. *J. Pharm. Sci.* **2006**, *66*, 1615-1618.
- Bhavsar, A.S.; Talele, G.S.; Fursule, R.A.; Surana, S. J. RP-HPLC estimation of paracetamol and valdecoxib in combined dosage form. *Indian J. Pharm. Sci.* **2006**, *68*, 675-677.
- Nieder, M.; Jaeger, H. High performance liquid chromatographic determination of metoclopramide in plasma and urine and its application to biopharmaceutical investigations. *J. High Resolution Chromatogr.* **2005**, *10*, 659-664.
- Leucuta, A.; Vlase, L.; Farcu, D.; Nanulescu, M. Romanian. Pharmacokinetic interaction study between ranitidine and metoclopramide. *J. Gastroenterology.* **2004**, *13*, 211-214.
- Tessier, E.; Neirinck, L.; Zhu, Z. High performance liquid chromatographic method for the determination of sumatriptan with fluorescence detection in human plasma. *J. Chromatogr. B.* **2004**, *806*, 299-303.
- Boulton, D. W.; Duncan, G. F.; Vachharajani, N. N. Validation and application of a high-performance liquid chromatography/tandem mass spectrometry assay for sumatriptan in human plasma. *J. Biomed. Chromatogr.* **2003**, *17*, 48-52.
- Milenkova, K.; Dimitrovska, A.; Ugrinova, L.; Trajkovi, S. *Bull. Chem. and Technol. Macedonia*, **2003**, *22*, 33-37.
- Levent, M. HPLC method for the analysis of paracetamol, caffeine and dipyrone. *Turk. J. Chem.* **2002**, *26*, 521-528.
- Canaparo, R.; Muntioni, E.; Zara, G. P.; Pepa, C. D.; Berna, E.; Casta, M.; Eandi, M. Determination of ibuprofen in human plasma by high-performance liquid chromatography: validation and

- application in pharmacokinetic study. *J. Biomed. Chromatogr.* **2000**, 14, 219-226.
20. Radwan, M. A. Determination of metoclopramide in serum by HPLC assay and its application to pharmacokinetic study in rat. *J. Analytical Letters.* **1998**, 31, 2397-2410.
  21. Lai, C. K.; Lee, T.; Au Ming, K.; WoChan, Y. Uniform solid-phase extraction procedure for toxicological drug screening in serum and urine by HPLC with photodiode-array detection. *J. Clinical chemistry.* **1997**, 43, 312-325.
  22. Franklin, M.; Odontiadis, J.; Clement, E. M. Determination of sumatriptan succinate in human plasma by high-performance liquid chromatography with coulometric detection and utilization of solid-phase extraction. *J. Chromatogr. B.* **1996**, 681, 416-420.
  23. Venkateshwaran, T. G.; King, D.T.; Stewart, J. T. HPLC determination of a metoclopramide and ondansetron mixture in 0.9% sodium chloride injection. *J. Liq. Chromatogr. Relat. Technol.* **1995**, 18, 117-126.
  24. Jung, E. S.; Lee, H.S.; Rho, J. K.; Kwan, K. I. Simultaneous estimation of ibuprofen and ibuprofen in human plasma by HPLC with column switching. *J. Chromatogr.* **1993**, 37, 618-622.
  25. Nahata, M. C. Determination of ibuprofen in human plasma by high-performance liquid chromatography. *J. Liq. Chromatogr. Relat. Technol.* **1991**, 14, 187-192.
  26. Rustum A. M. Assay of ibuprofen in human plasma by rapid and sensitive reversed-phase high-performance liquid chromatography: application to a single dose pharmacokinetic study. *J. Chromatogr. Sci.* **1991**, 29, 16-20.
  27. Suleiman, M. S.; Najib N. M.; Sayed, Y. M.; Badwan, A. Stability-indicating high-performance liquid chromatographic assay for the determination of metoclopramide hydrochloride in pharmaceutical dosage forms. *J. Analyst.* **1989**, 114, 365-368.
  28. Mehvar, R.; Jamali, F.; Pasutto, F. M. Liquid-chromatographic assay of ibuprofen enantiomers in plasma. *J. Clin. Chem.* **1988**, 34, 493-496.
  29. Minkler, P. E.; Happel, C. L. Determination of ibuprofen in human plasma by high-performance liquid chromatography. *J. Chromatogr.* **1988**, 428, 388-394.
  30. Boussairi, A.; Guyon, F. Liquid chromatographic analysis with electrochemical detection for metoclopramide in human plasma. *J. Chromatographia.* **1987**, 23, 651-652.
  31. Lalande, M.; Wilson, D. L.; Mc Gilveray, I. Rapid high-performance liquid chromatographic determination of ibuprofen in human plasma. *J. Chromatogr.* **1986**, 377, 410-414.
  32. McDermed, J. E.; Cohen, J. L.; Joseph, C.; Strum, S. B. Clinical pharmacokinetics of high-dose metoclopramide in cancer patients receiving cisplatin therapy. *J. Clin. Oncology.* **1985**, 3, 1400-1408.
  33. Shah, A.; Jung, D. Improved high-performance liquid chromatographic assay of ibuprofen in plasma. *J. Chromatogr.* **1985**, 344, 408-411.
  34. Cohen, J. L.; Hisayasu, G. H.; McDermed, J. E.; Strum, S. B. High pressure liquid chromatographic analysis of metoclopramide in serum. *J. Pharm. Res.* **1984**, 01, 43-45.
  35. Albert, K. S.; Rabe, A.; Garry, m.; Antal, E. J.; Gillespie, W. R. Determination of ibuprofen in capillary and venous plasma by high-performance liquid chromatography with ultraviolet detection. *J. Pharm. Sci.* **1984**, 73, 1487-1489.
  36. Aravind, M. K.; Miceli, J. N.; Kauffman, R. E. Determination of ibuprofen by high-performance liquid chromatography. *J. Chromatogr.* **1984**, 308, 350-353.
  37. Lockwood, G. F.; Wagner, J. G. High-performance liquid chromatographic determination of ibuprofen and its major metabolites in biological fluids. *J. Chromatogr.* **1982**, 232, 335-343.
  38. Block, W.; Pingoud, A.; Khan, M.; Kjellerup, P. The pharmacokinetics, bioequivalence and bioavailability of different formulations of metoclopramide in man. *J. Drug res.* **1981**, 31, 1041-1045.
  39. Prabaha, a. E.; Kalaichelvi, R.; Thangabalan, B.; Karthikeyan, R.; Kumar, V. Validation spectroscopic method for estimation of sumatriptan succinate in pure and from tablet formulation. *Research J. Pharm. Tech.* **2009**, 2.
  40. Kirtawade, R.; Seervi, C.; Salve, P.; Patil, K.; Kulkarni, A.; Dhabale, P. Validation spectroscopic method for estimation of ibuprofen from tablet formulation. *J. Arch pharm. Sci and Res.* **2010**, 2, 271-273.
  41. Wadher, S. J.; Pathankar, P. R.; Puranik, M.; Ganjiwale, R.O.; Yeole, P. G. Simultaneous spectrophotometric estimation of paracetamol and metoclopramide hydrochloride in solid dosage form. *Indian J. Pharm. Sci.* **2008**, 70, 393-395.
  42. Khan, F.; Lohiya, R. T.; Umekar, M. J. Development of UV spectrophotometric method for the simultaneous estimation of meloxicam and paracetamol in tablet by simultaneous equation, absorbance ratio and absorbance correction method. *Int. J. ChemTech Res.* **2010**, 2, 1586-1591.
  43. Shah, C. R.; Suhagia, B. N.; Shah, N. J.; Shah, R. R. Development and validation of a HPTLC method for the estimation of sumatriptan in tablet dosage forms. *Indian J. Pharm. Sci.* **2008**, 70, 831-833.
  44. Mohammad, A.; Sharma, S.; Bhawani, S. A. Reversed phase thin layer chromatography of five co-administered drugs with surfactant modified solvent systems. *Indian J. Chem. Tech.* **2009**, 16, 344-350.