

Enhancement of Stress Management skills of College students using Classification Method

M.Saravanan¹, V.L.Jyothi²

¹Research Schloar,
Sathyabama University, Jeppiaar Nagar, Chennai - 600119.

²Prof & Head,
Jeppiaar Engineering College, Jeppiaar Nagar, Chennai – 600119

Abstract

Instructive Data Mining is a capable procedure for different fields like Real time and Educational field. The examination in instructive field is it demonstrates that the enormous measure of under studies information which can be utilized take in the valuable example understudies learning styles. My exploration outline work is anticipating the understudy execution utilizing grouping techniques. The Data were gathered from UCI machine repository that contains the understudies' demographics, past scholastic records, and family foundation data. Choice Tree, Naïve Bayes, and Rule Based arrangement strategies are connected to the understudies' information so as to deliver the best understudies' scholarly execution forecast model. The trial result demonstrates the Rule Based is a best model among alternate methods by getting the most noteworthy exactness estimation of 81.3%. The removed learning from expectation model will be utilized to distinguish and profile the understudy to decide the understudies' level of accomplishment in the main semester.

Keywords: Semester, Prediction, Classification, result, factors.

1. INTRODUCTION

Information mining is by and large called as information learning or disclosure. It is the way toward breaking down information from alternate points of view and compressing it into helpful information's. This study is generally accepting understudies bunches in various connection. To extend about present learning in which understudy execution changes. Learning associations is absolutely taking into account the conduct of understudy characteristics. Set of credits are framed by gathering of answers. Two variables is highlighted utilizing expectation step which are called as "mistaken" and "right first endeavor". A few variables are distinguished which depicts coach's in various groups. In like manner, educator's choice made can be acquired utilizing VLE (Virtual Learning Environments)[1].The objective of the venture is to investigate the impact of abilities on Student's scholastic execution among advanced education, sports, Extra-curricular and preparing understudies. The principle destinations of the undertaking are to expand understudies execution, Suggest guiding for understudies for a specific space to keep away from strain.

2. RELATED WORK

In the prior works, the common strategy is EDM for talking about over the e-learning information .These methods are a unit proclaiming some extra vital targets like clear layout of answers to prepare an understudy for higher learning exercises and make sense of the criteria the most applicable for the guide's encourage for hand-picked information on of an English e-gaining course from PSLC archive for contextual investigation in acceptance step.

Michael Fire in the year 2012 has proposed a paper on Predicting Student Exam's Scores by Analyzing Social Network Data[1]. It anticipated a one of a kind procedure for the forecast of an identity's achievement in an instructional course and furthermore drawn out a spread of alternatives by abuse every diagram hypothesis and informal organizations examination. At long last, we have an ability to succeed numerous past states and machine learning systems to identify the execution of understudy in a preceeding course.The entire of the diagrams assessed by contrasting the association between dissemination of the understood connection and unequivocal connections and constructed a connections. This social information has a little p-esteem, that backings this speculation.

Bichsel.J in the year 2013 proposed a paper on Learning Analytics in Higher Education[2] :An Annotated Bibliography .The reason for this study was to build up an uncountable development model through which organizations can survey their own particular advancement in the utilization of scholarly and learning examination. The creator suggests building up the estimation of information based basic leadership through a few little up and coming fruitful undertakings or a solitary substantial one in the region of enlisted administration, value decrease, or asset improvement. First is that advancement of examination abilities in plan with structure technique. Sieman's (2005) social learning hypothesis of connectivism is examined similar to the two essential systems for information association and investigation –socio driven and egocentric (Garton, Haythornthwaite, and Wellman, 1997 and Chung and Davis, 2005). The previous locations the structure of part collaborations at the system level, while the last distinguishes the connected contacts of people.

3. MATERIALS AND METHODS

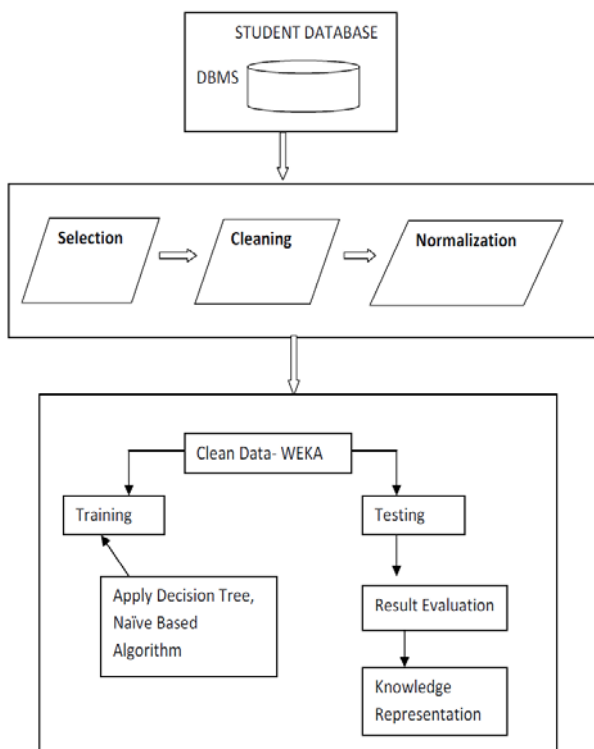


Fig.3.1: Proposed Framework

Set up the understudies study subtle elements like rate and school semester GPA and CGPA, sports movement points of interest and extracurricular action subtle elements. These data are put away in dataset through this the school measuring the understudies capacity and aide the understudies in right way. The capacity to foresee individual or gathering accomplishment in exams and sports and extracurricular action points of interest has been looked into. Precisely foreseeing understudies' exam or course evaluations, sports and extracurricular evaluation can possibly help understudies in different ways [9]. Make the void information as invalid quality.

Utilizing dataset, taking into account the understudies semester rate, sports and extracurricular interest level execution we sort the understudies into Group A, Group B and Group C[2,3,4].

The Group A contains the fabulous understudies. In study, who get S and An evaluation in all subjects that understudies has a place with Group A. In games and extracurricular exercises, who have National and State level player testament that understudy has a place with Group A. The Group B contains normal level understudies. In study, who get normal evaluations that understudy has a place with Group B. In games and extracurricular exercises, those have Divisional and District level player declaration those understudies has a place with Group B. The Group C contains poor understudies. Who have not enthusiasm for studies, sports and extracurricular exercises those understudies has a place with Group C. We join Group An and Group C understudies and characterize the scholastic

technique for Group B. So as to enhance the scholastic procedure execution we need to concentrate more on the Group B understudies.

Characterize the scholastic methodology for Group A, B and C. In the wake of training break down the Group B system. Anticipate the general enhanced result GroupWise and consolidate Group An and Group C. Anticipate the Group B understudies with a specific end goal to giving the instructing to the Group B understudies there might be opportunity to enhance the general execution. In the event that Group B execution increments consequently the general execution will be expansion.

Once in a while musings of anxiety and nervousness are our component of life. Different levels of anxiety can really be fine for us; some anxiety can offer certainty to us and upgrade our improvement. Be that as it may, when anxiety and uneasiness live for a finished timeframe, they can happen to an inconvenience or still a physical condition plausibility. In this exploration in the wake of making the gatherings like A, B and C should maintain a strategic distance from anxiety and nervousness in undergrads. In some cases Group An understudies having great records contrast with Group B and Group C. This unmistakably demonstrates the need to stay away from anxiety and uneasiness in Group B and Group C understudies. In an overview led by a few advisors, it is apparent that 20% of understudies face stress in greater part of the occasion. 10% of understudies have faith in conferring suicide for being eased, 34% of understudies report their passionate aggravation was at top inside the most recent 90 days, 13% of understudies endure sadness, apprehension or other cerebral wellbeing issue. 80% of undergrads say they have stretch regularly.

4. RESULTS AND DISCUSSION

To Compare C4.5, ID3 and CART choice tree calculations to anticipate the execution of the main year designing students .It was three class forecasts. Understudies were delegated pass, fall flat and promoted. This model regarded distinguishing the understudies that are well on the way to come up short. The Table demonstrates the exactness of ID3, C4.5 and CART calculations for characterization connected on the above information sets utilizing 10-fold cross acceptance is seen as takes after.

Table 4 Accuracy of Algorithms

Algorithm	Correctly Classified Instances	Incorrectly Classified Instances
ID3	52.222%	16.444%
C4.5	57.666%	22.222%
CART	52.222%	17.444%

Figure 4.2, the overall result that is the academic performance of the students is predicted

Figure 4.3, the students marks which are segregated into groups A,B and C, are combined into two groups.

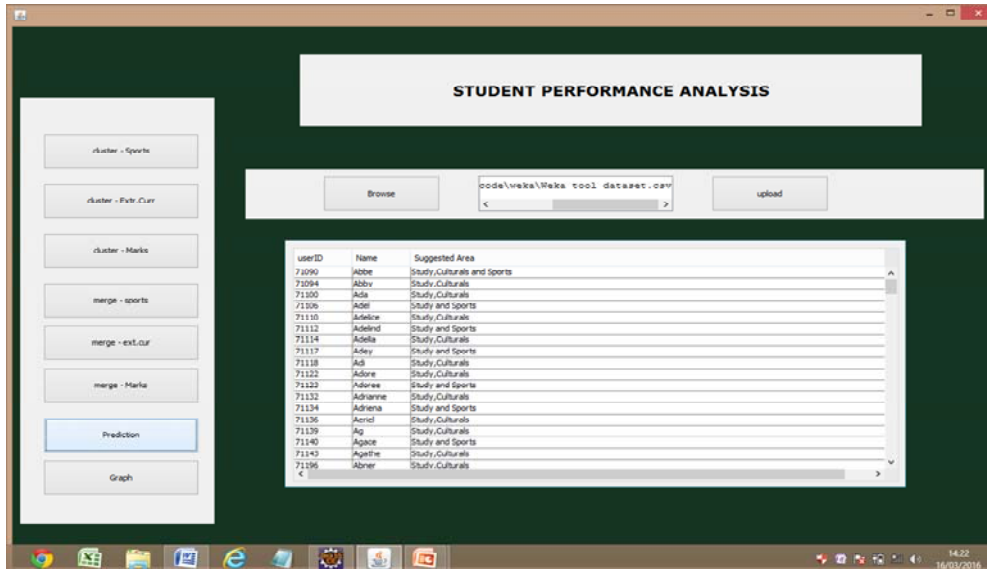


Figure 4.2: Screenshot of Predicting Overall Result

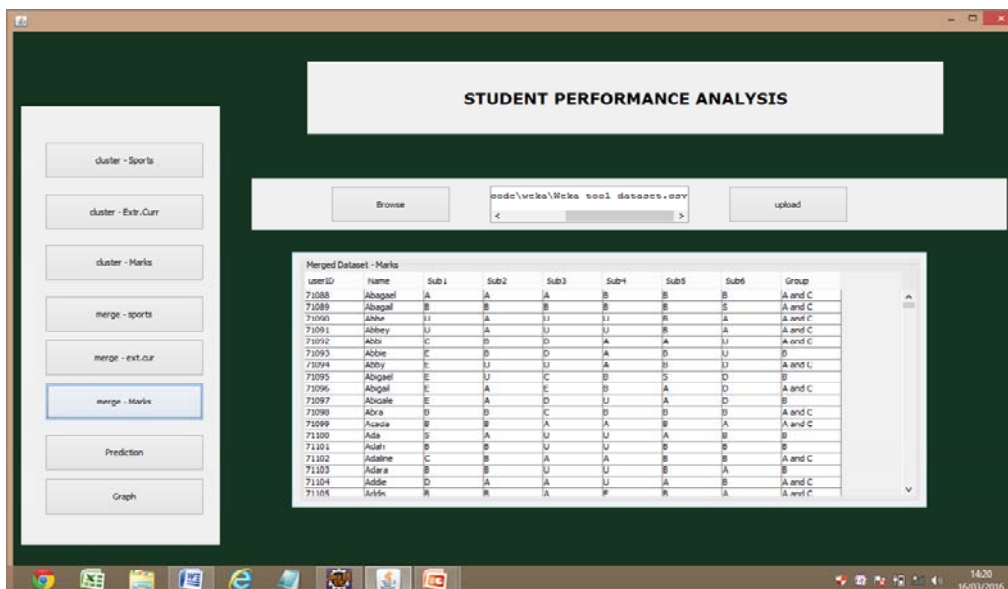


Figure 4.3: Screenshot of Merging Student Marks.

5. CONCLUSION

This model is chiefly listening painstakingly on examining the forecast exactness of the scholastic presentation of the understudies utilizing by Naïve Bays Network Classifier calculation and to assess it with the expectation truth of the scholarly routine of the understudies utilizing a dataset that incorporates of all scholarly, individual understudies utilizing Naïve Bays Network Classifier calculation. It helps the association to know the scholastic position of the understudies in continue furthermore to screen on frail understudies to show signs of improvement their scholarly results. The study can be affirmed by better expectation or a creative calculation can be urban for better characterization and forecast utilizing the high control qualities would be the potential work. The future upgrade of this paper is thinking about the understudy instructive foundation and exercises of understudy's relationship between the staff and understudies and school environment and offers proposal to the vocation.

REFERENCES

- [1]. Jain, Lakhmi C., and Raymond A. Tedman. 2007. "Evolution of teaching and learning paradigms in intelligent environment". Vol. 62. Springer.
- [2]. Jens Bennedsen and Michael E.Caspersen "optimists have more fun , but do they learn better? On the influence of emotional and social factors on learning introductory computer science"2008.
- [3]. Michael Fire, Gilad Katz, Yuval Elovici, Bracha Shapira, and Lior Rokach, "Predicting Student Exam's Scores by Analyzing Social Network Data "2012, chapter, Active Media Technology, Volume 7669 of the series Lecture Notes in Computer Science,PP 584-595.
- [4]. Nettleton, David F. February 2013. "Data mining of social networks represented as graphs". Computer Science Review, Volume 7, February, 2013, PP 1-34 .
- [5]. Romero, Cristóbal, and Sebastian Ventura. 2007 "Educational data mining: A survey from 1995 to 2005, Volume 33 Issue 1, July, 2007 , PP 135-146.
- [6]. Siu-Man Raymond Ting "Predicting Academic Success of First Year Engineering Students from Standardized Test Scores and Psychosocial Variables", 2001,Vol 17,No 01,PP 1-8.